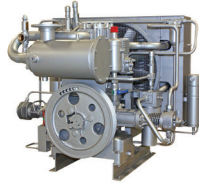


# CLASSIC SERIES C23.1

CNG System For Medium To Large Fleets



## FEATURES



### COMPRESSOR

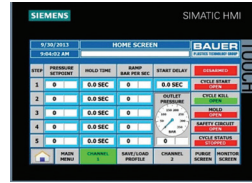
Featuring BAUER's proven C23.1 four-stage, air-cooled compressor at the heart of the system.

- › Ideal for sites with low inlet pressure
- › Designed continuous duty application
- › Extremely durable workhorse



### COST OF OWNERSHIP

Designed for long periods between maintenance intervals and very low cost of ownership. 8000 hrs between ring changes. 30,000 hrs before major overhaul. Lifetime BAUER support.



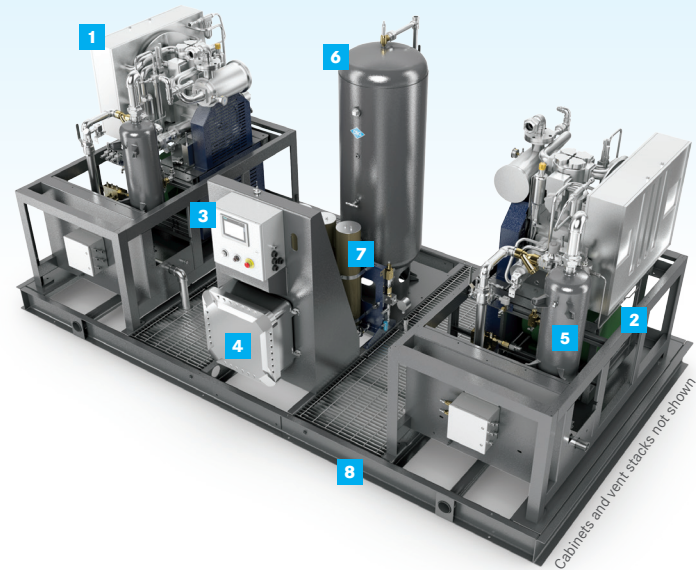
### CONTROL SYSTEM

State-of-the-art control system and intuitive machine interface makes operating the unit simple.

- › Excellent diagnostics
- › Remote interface via smartphone option
- › Online manual and operating / maintenance instructions standard

## BENEFITS

- › Great value with time proven performance available in Simplex and Duplex execution.
- › BAUER'S legendary performance, quality, and reliability are backed by the best warranty in the industry.
- › Standard, pre-engineered system with customizable options.
- › Integrated CNG system, both easy and economical to install.
- › Easy to maintain with low cost of ownership makes the unit very economical to operate.



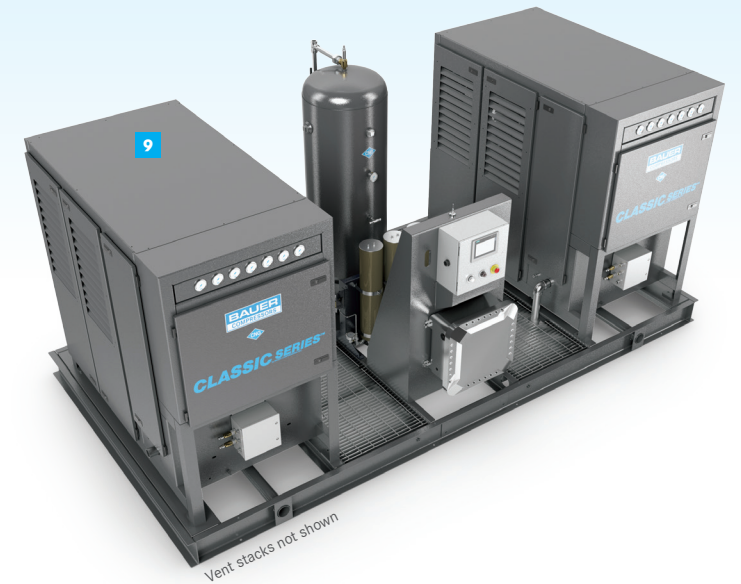
- 1 BAUER C23.1 COMPRESSOR (x2)
- 2 HIGH EFFICIENCY TEFC MOTOR (x2)
- 3 NEMA 4 PLC CONTROL PANEL WITH TOUCH SCREEN OPERATOR INTERFACE AND EMERGENCY STOP BUTTON
- 4 NEMA 7 STARTER PANEL
- 5 INLET BUFFER TANK (x2)
- 6 VAPOR RECOVERY TANK
- 7 HIGH PRESSURE DRYER (OPTIONAL)
- 8 COMMON SKID

- 9 ENCLOSURE DESIGNED FOR DURABILITY AND ATTRACTIVE APPEARANCE

### OPTIONAL FEATURES

- › High Pressure Drying
- › Priority Fill Panel
- › Cell Phone Modem with Remote Notification
- › Dispensing
- › Compressor Crankcase Heaters
- › Audible Alarm

Designed in compliance with NFPA 52 and NFPA 70 for Class 1, Division 2, Group D.



## TECHNICAL DATA

Model	Inlet pressure		Final pressure		Capacity				Number of Stages	Motor			
	PSIG		BAR		CFM*	M <sup>3</sup> /H*	DGE/H	GGE/H		hp*	kW*		
	min	max	min	max								max	max
C23.1	1	5	0.07	.34	5000	345	50	85	21	25	4	40 (x2)	30 (x2)

Note: All capacities are referenced to maximum inlet pressure. Capacity is reduced if inlet pressure is less than maximum. \*Double for Duplex. Performance tolerance +/- 5%.

## SYSTEM FOOTPRINT

### DIMENSIONS L X W X H inches (mm)

- › 180" x 92" x 80" (4572mm x 2337 x 2033mm)

### WEIGHT pounds (kg)

- › 1430 - 1515 lb (649 - 687 kg) depending upon model and options

\*Dimensions exclude vent stack \*\*Dimensions and weight approximate

## CUSTOMER SUPPORT



GLOBAL SUPPORT



SINGLE SOURCE RESPONSIBILITY



LOW COST OF OWNERSHIP



LIFECYCLE PERFORMANCE

FOR MORE INFORMATION PLEASE VISIT:  
[www.BauerCustomerSupport.com](http://www.BauerCustomerSupport.com)



SAI GLOBAL  
ISO 9001  
Quality